

2017



Vermessungscode: AUT 17 003 RS

Dipl.-Ing. Reinhard Sachs

MEASUREMENT REPORT – (WEINSTADTLAUF LANGENLIOS)

Name of the race: Weinstadtlauf Langenlios 2017

Race Distance: 10km

Date of the event: 02. September 2017

Race organiser: Günther Mistelbauer, obmann-stv@ulc-langenlios.at, +43 6648361035

Projectmanager: Günther Mistelbauer, obmann-stv@ulc-langenlios.at, +43 6648361035

Race Director: Günther Mistelbauer, obmann-stv@ulc-langenlios.at, +43 6648361035

Type of the course: 10km – circuit

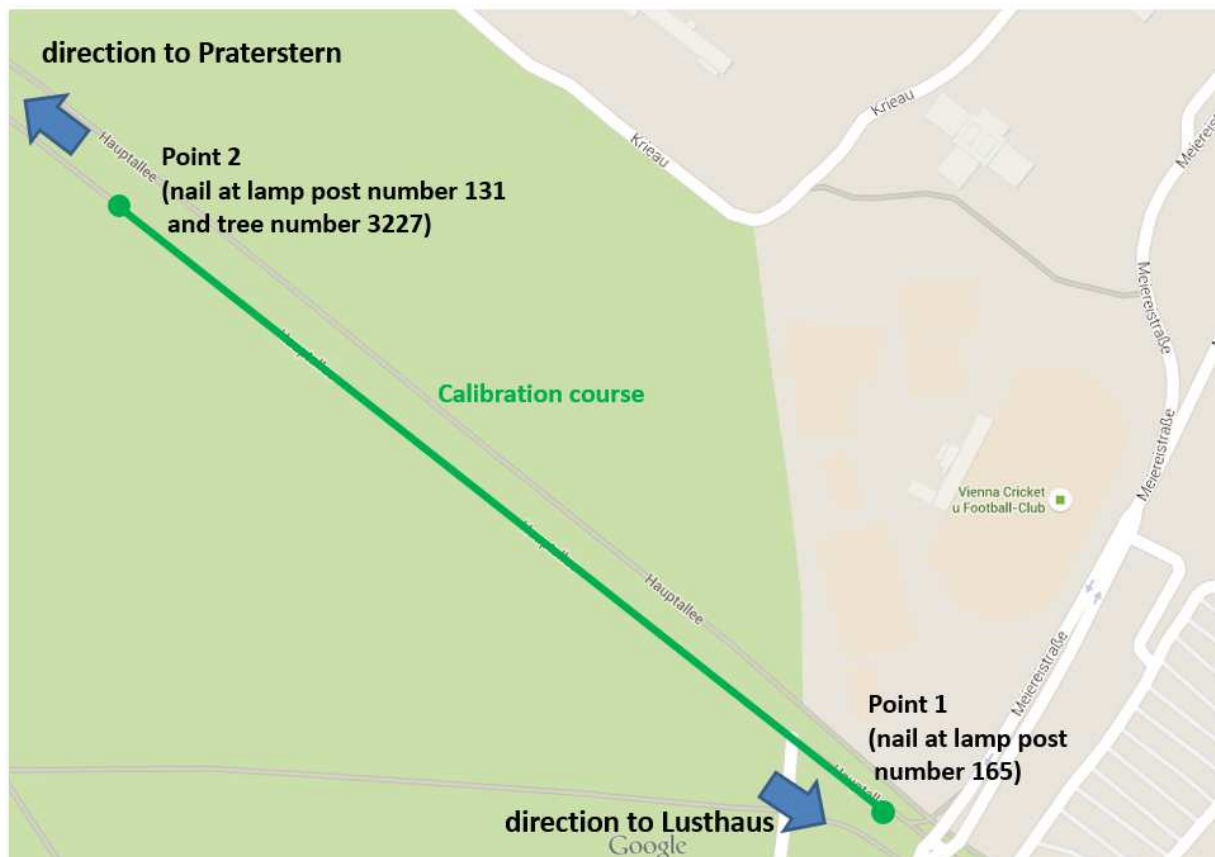
Place to Start: Stadion Langenlios

Place to Finish: same as start

Name of measurer: Dipl.-Ing. Reinhard Sachs, reinhard.sachs@gmx.at, +43 676 6308507

Date of Measurement: 22.4.2017, 10:00am, 13°

Calibration course (same as AUT 15 004 RS_Geher)



Length of the calibration course: 400m

Date and temperature: 01.08.2015, 20°

Measurement: steel tape, 50 meters

$$8 \times 50 = 400m$$

$$8 \times 50 - 0,025 = 399,975 m$$

$$400 + 399,975 = 799,975 m$$

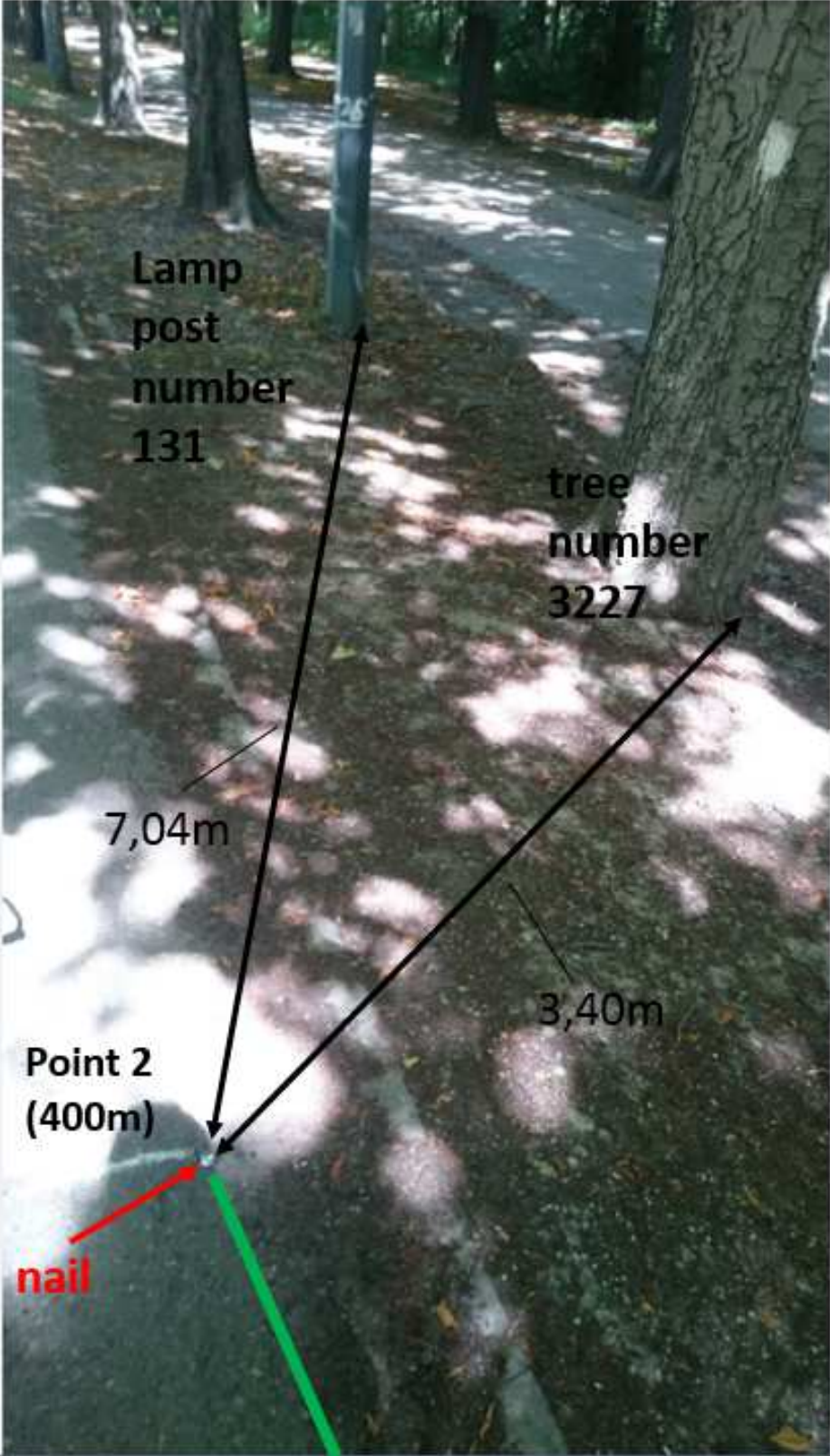
$$\text{average length: } 799,975 : 2 = \mathbf{399,9875 m}$$

Corrected average length: $399,9875 \times [1 + (20 - 20) \times 0.0000115] = \mathbf{399.9875 m}$

=> add 1,25 cm to Point 1, move point 1 1,25cm (in direction Lusthaus).

Point 1 (nail direct at lamp post 165)

Point 2



Pre-calibration

	<i>recorded count</i>	<i>elapsed count</i>
<i>Start count</i>	54000	
<i>End 1st ride</i>	58657	4657
<i>End 2nd ride</i>	63312	4655
<i>End 3rd ride</i>	67968	4656
<i>End 4th ride</i>	72626	4658
average counts:		4656,5

Counts per meters (400m) 11,64125
Counts per meters (400m) with 1‰ 11,653

Post-calibration

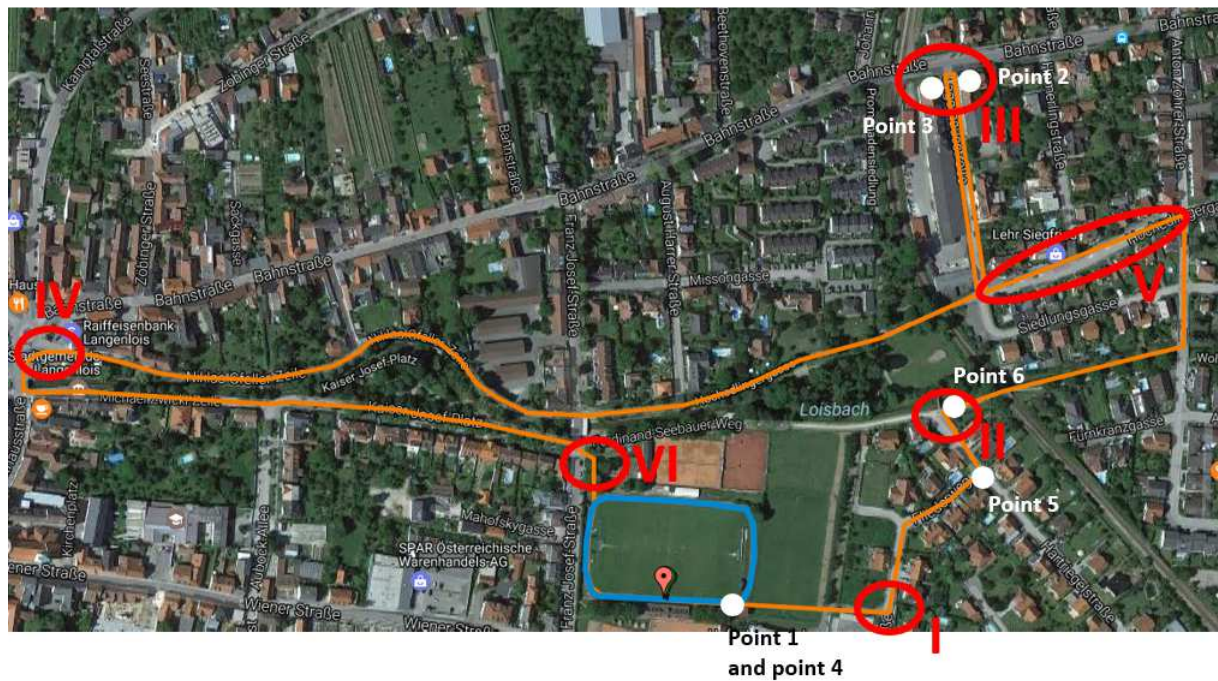
	<i>recorded count</i>	<i>elapsed count</i>
<i>Start count</i>	93000	
<i>End 1st ride</i>	97657	4657
<i>End 2nd ride</i>	102312	4655
<i>End 3rd ride</i>	106970	4658
<i>End 4th ride</i>	111626	4656
average counts:		4656,5

Counts per meters (400m) 11,64125
Counts per meters (400m) with 1‰ 11,653

Working constant for that day **11,653** counts per meter

2,5km course (4 times)

Short overview



Measured point	Counter reading	counts	distance [m]
Point 1, Start/finish line (100m finish line, track)	0		
Point 2, beginning of turn around	10552	10552	905,526
Point 3, end of turn around	10650	98	8,410
Point 4, start/finsh line (same as point 1)	29033	18383	1577,548
Sum			2491,485 m

Measured point	Counter reading	counts	distance [m]
Point 5, gully	32700		
Point 6, traffic sign	33289	589	50,545 inside
Point 5, gully	34100	811	
Point 6, traffic sign	34783	683	58,612 outside
Dif.			8,067 m

The course is 8,5m to short. Therefore, it has to be add at Point II additional 8 meters. (See at detail drawings)

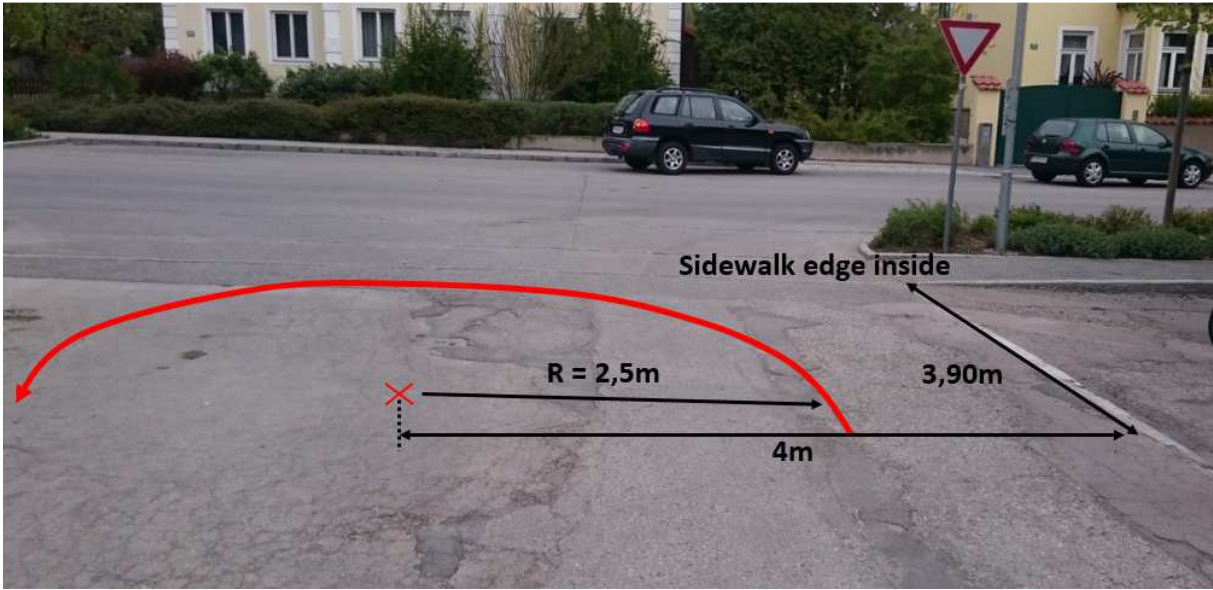
Detail I



Detail II



Detail III



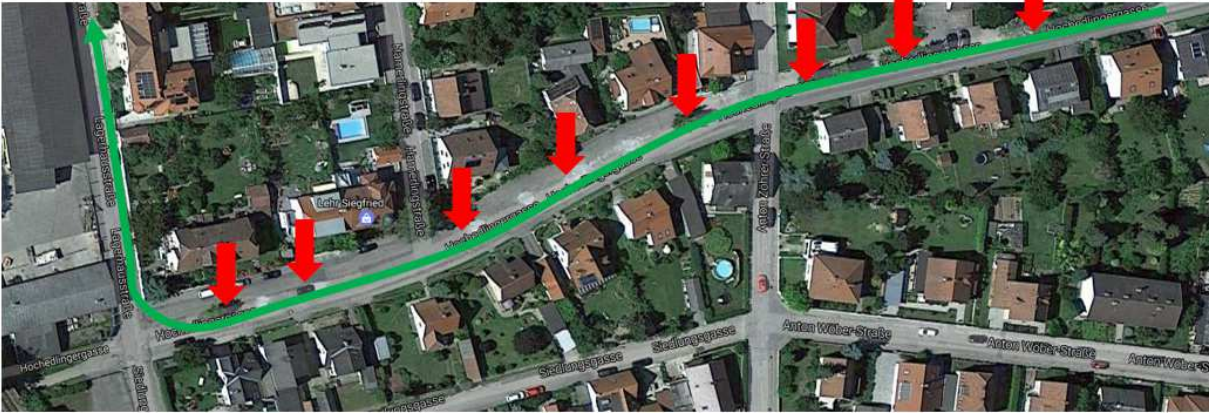
Detail IV



Detail V

Only half of the street (limitation: tree)

tree



Detail VI

